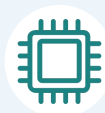




GPON ONU

4GE

**FD504G-G-R410**



High Speed CPU



Low Power Consumption



Optional Shell Supply



Software Customization

## Brief Views

---

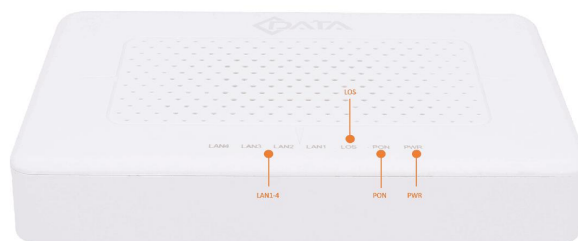
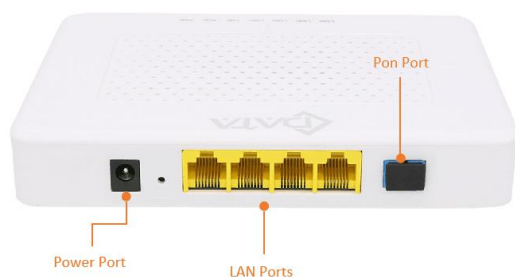
FD504G-G-R410 data type ONU is one of the GPON optical network unit design to meet the requirement of the broadband access network. It apply in FTTH/FTTO to provide the data based on the GPON network.

FD504G-G-R410 have a high reliability and provide quality of service guarantee, easy management, flexible expansion and networking. It fully meets the ITU-T and IEEE technical standards and have good compatibility with third party OLT.

## Functional Feature

- In compliant with ITU - T G.984 standard
- Support ONU auto-discovery/Link detection/remote upgrade of software
- Support multiple registration methods
- Support port VLAN configuration
- Support mac-address learning
- Support port-based rate limitation and bandwidth control
- Support port isolate
- Support port flow-control
- Support broadcasting storm resistance function
- Support igmp transparent/snooping/proxy mode
- Support remote management configuration
- Support Dynamic Bandwidth Allocation (DBA)
- Support AES encryption and decryption
- EMS network management based on SNMP ,convenient for maintenance
- Support power-off alarm function ,easy for link problem detection

## Product Interface and LED



## LED Definitions

Indicator		Description
PWR	Power status	On: The ONT is power on; Off: The ONT is Power off;
PON	ONT Register	On: Success to register to OLT; Blinking: In process of registering to OLT; Off:Failed to register to OLT or no normal optical signal input;
LOS	GPON optical signals	On: Optical power lower than receiver sensitivity; Off: Optical in normal;
LAN	LAN port status	On: Ethernet connection is normal; Blinking: Data is being transmitted through the Ethernet port; Off: Ethernet connection is not set up;

## Hardware

### ● GPON Port

- Single mode single fiber
- GPON: FSAN G.984.2 standard, Class B+
- GPON: 2.488Gbps/1.244Gbps downstream/upstream
- Wavelength :  
Transmit: 1310nm Receiver: 1490nm
- Receiving sensitivity :  
GPON: -28dBm
- Saturated power :  
GPON: -8dBm
- Transmitting power :  
GPON: 0.5~5dBm

### ● User Port(LAN)

- RJ-45 connector
- 4\*10/100/1000 Mbps adaptive Ethernet port
- Full/half duplex
- Auto MDI/MDI-X

- **Indicators**
  - PWR / PON / LOS / LAN
- **Power**
  - External 12VDC/0.5A power supply adapter
  - Power consumption: <4.5W
- **Dimension and Weight**
  - Item Dimension:
  - 160mm(L) x 112mm(W) x 28.5mm (H)
  - Item weight: 0.20kg
- **Environmental Specifications**
  - Operating temperature: 0 to 40° C
  - Storage temperature: -40 to 85° C
  - Operating humidity: 10% to 90%(Non-condensing)

## Software

---

- **Management**
  - GPON:OMCI / WEB / TR069 / Telnet
- **Register**
  - Auto-discovery/Link detection/Remote upgrade software
  - Auto/MAC/SN/LOID+Password authentication
- **Switch**
  - MAC address learning
  - MAC address learning account limit
  - Broadcast storm suppression
  - VLAN transparent/tag/translate/trunk
- **Multicast**
  - IGMP V2
  - IGMP VLAN
  - IGMP transparent/Snooping/Proxy
- **Security**
  - Firewall
  - MAC address/URL filter
  - Remote WEB/Telnet access control

## Application

- Typical Solution: FTTH
- Typical Business: Internet

